



Capability Statement



*Celebrating 30 years
1985 - 2015*

MacKellar Excavations Pty Ltd

ABN: 82 130 068 718

Company Details

Mackellar Excavations Pty Ltd

ABN: 82 130 068 718
Year Established: 1985
Location: 16 Torrens Road, Gunnedah. 2380. NSW
Postal Address: P O Box 259, Gunnedah. 2380. NSW
Ph No: 02 6742 4222
Fax No: 02 6742 2208
Email: office@mackexc.com.au
Website: www.mackexc.com.au

Primary Contact:

Name: Brendon MacKellar
Position title: Managing Director
Email address: brendon@mackexc.com.au
Mobile Phone: 0421 272 770

Insurance Details

WorkCover Policy No: INF0184179GWC154
Public/Plant Liability: 12T1009705ISP
Management Liability: 2TA000165PIP

About MacKellar Excavations

MacKellar Excavations Pty Ltd Pty Ltd is an earthmoving and civil construction company specializing in commercial and industrial projects in North West NSW.

Our proactive and innovative team of skilled people strives to deliver to our clients' projects of the highest quality, on time and cost effectively.

MacKellar Excavations Pty Ltd Pty Ltd owns and operates an extensive fleet of modern equipment and provides services such as Project Management, Civil Construction, Earthworks, and Plant Hire and aggregate supply.

The company began operations in Boggabri in 1985 and has expanded to facilitate the growth of our key client's businesses. Our strategy of providing an experienced team of people with innovative solutions committed to success through Performance, Quality & Safety has enabled us to build relationships with our clients that have ensured our capabilities and growth.



Code of Practice

Staff involvement in the formulation of our policies and continuous training in their application is our key objective. The MacKellar Excavations Pty Ltd Pty Ltd Personnel:

- Respect other people, their property and their time
- Work as a team
- Reward effort
- Share knowledge
- Be honest
- Show integrity in all dealings
- Mentor and teach



Health & Safety

Our integrated management system is designed to ensure protection of our staff and the environment to the highest possible standards.

MacKellar Excavations Pty Ltd Pty Ltd believes our people are the most valuable asset and the health and safety of all persons including the community is our number one priority and cannot be compromised. We believe all injuries and accidents are preventable and risk analysis and preventative measures forms a key part of our job procedures.

Environment

At MacKellar Excavations Pty Ltd Pty Ltd we strive to conserve resources, reduce waste, eliminate pollution and minimise the environmental impact our projects have. Through consultation with the community and conformance with statutory requirements site specific environmental plans are designed for each of our projects.

Capabilities and Capacity

MacKellar Excavations Pty Ltd Pty Ltd provides high quality civil construction capabilities and our civil construction scope of work includes:

- | | |
|--|---------------------------------|
| Sub divisions | Mine Site works |
| Road works | Residential |
| Industrial and commercial site preparation | |
| Water storages | Pipe laying |
| Sewerage and water treatment | Supply of blue metal aggregates |



MacKellar Excavations Pty Ltd Pty Ltd provides earthworks and site preparation in Gunnedah & North West NSW and our scope of work includes:

- | | |
|-----------------|--|
| Bulk earthworks | Imported fill |
| Access roads | Site preparation |
| Hardstand pads | Drainage |
| Open drains | Concrete lined drains |
| Rock drains | Multi-cell Culvert installation |
| Land clearing | Roadwork construction and reconstruction |

MacKellar Excavations Pty Ltd Pty Ltd owns and manages its own modern fleet of plant. MacKellar Excavations Pty Ltd Pty Ltd has experienced operators with well-maintained earthmoving and construction equipment to deliver successful outcomes for all projects small and large.

Management

Brendon MacKellar – Managing Director

Brendon MacKellar is the Director of MacKellar Excavations Pty Ltd, which commenced operations in 1985.

Brendon's key focus is to ensure that the company achieves its overall performance indicators of on-time delivery within the client's financial budget, zero defects and a safe workplace environment.

Bruce MacKellar – Operations Manager

Bruce MacKellar is the founder of MacKellar Excavations Pty Ltd, which commenced operations in 1985.

As an active Manager of the company Bruce provides MacKellar Excavations Pty Ltd with an extensive wealth of experience in earthmoving, construction and heavy engineering together with a progressive attitude to the future growth and financial security of the company.

Bruce Sommerlad – Financial Controller (FIPA)

Bruce Sommerlad is the Financial Controller of MacKellar Excavations Pty Ltd, with an extensive knowledge and experience in accounting and running business successfully. Bruce's strong client focus and professional approach ensures MacKellar Excavations Pty Ltd will assist clients achieve successful outcomes.

Joel Herbert – Senior Project Manager

Joel Herbert is the Senior Project Manager at MacKellar Excavations Pty Ltd and has been involved in civil works for over 25 years in construction and mining projects in Queensland and NSW coal fields.

Joel's experience includes Subdivision Construction and Civil Earthworks projects which compliment MacKellar Excavations Pty Ltd.'s objectives in the Civil Construction and Earthmoving industries.

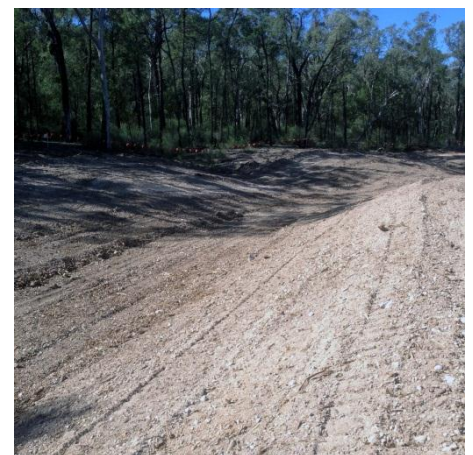
Tim MacKellar – WHS & HR

Tim MacKellar is the Safety Officer and Human Relations Manager at MacKellar Excavations Pty Ltd.

Tim's extensive experience includes managing a large multi outlet retail business with over 120 staff, working in a senior management role wholesale and the last 3 years working with MacKellar Excavations Pty Ltd building better internal management systems and processes.

Project Showcase

- 2010: Extension of CHPP reclaim tunnel for Whitehaven Coal
- 2011: Worked alongside John Holland Constructions doing major dam wall upgrades at Keepit Dam
- 2011: Booloocoroo Sub-Division, Gunnedah
- 2012: Major supplier to ARTC of plant, equipment and construction aggregate for the re-building of the railway bridge at Boggabri following a major de-railment of a coal train
- 2012: Bush's Lane Reconstruction for Whitehaven Coal
- 2012: Poplar Grove Sub-Division, Gunnedah
- 2013: Supplier of plant, equipment and construction aggregate for the Boggabri Coal Expansion Project. Build and construction of 100ML storage dam, ROM pad, super drain, balloon loop, stockyard, conveyor belt return trench, clean/dirty water drain, fuel farm pad, haul road diversion, rehabilitation works.
- 2013: Bindea Estate Sub-Division, Gunnedah
- 2013: Build and construct Switch Yard and Sub Station Pads for UGL Global Operations for the 110kva power line project for Boggabri Coal.
- 2014: Supplier of plant, equipment & construction aggregate for construction of the Northern Ring Road for Whitehaven's Maule's Creek Coal
- 2014: Supplier of plant, equipment & construction aggregate to Leighton's Holdings for construction of the new railway line for Whitehaven's Maule's Creek Coal & Idenitsu's Boggabri Coal.
- 2014: Supplier of plant, equipment & construction aggregate to Stripes Engineering for construction of the new water supply line for Whitehaven's Maule's Creek Coal.
- 2014: Supplier of plant, equipment & construction aggregate to Australian Rail Track Corporation for construction of a new access road at Chillcot's Creek
- 2014: Build and construct for UGL Global Operations of switch yard pad for Whitehaven Coal
- 2015: Tree clearing for Whitehaven's Maule's Creek Coal
- 2015: Topsoil Strip for Whitehaven's Maule's Creek Coal
- 2015: Construction of a super drain at Idemitsu's Boggabri Coal
- 2015: Civil works for BMD Group on the Bringelly Road Upgrade, Sydney
- 2015: Civil works for Thirdi Group for their Ashmore Park 58 lot sub-division at Kellyville, Sydney.



MACKELLAR EXCAVATIONS PLANT

Equipment

The company owns and operates the following equipment:

1. Caterpillar D10R- Single Shank Ripper
2. Caterpillar D8R- Multi Shank Rippers
3. Komatsu PC 850-8 Excavator (85 tonne)
4. Caterpillar 385B Excavator
5. Caterpillar 336D2L Excavator
6. Caterpillar 330CL Excavator
7. 3 x Caterpillar 329DL Excavators with TopCon GPS
8. Takeuchi 14 Ton Excavator with Push Blade
9. Caterpillar 140M Grader with TopCon GPS machine control
10. Caterpillar 825 Compactor
11. Caterpillar 972G Wheel Loader with scales
12. 2 x Caterpillar 972K Wheel Loader with scales
13. Caterpillar Smooth Drum Roller comes with Padfoot shells
14. Caterpillar CS78 Smooth Drum Roller
15. Protec Multi Smooth Tyre Roller
16. Caterpillar 740 Water Cart – 30,000 litres
17. 6 x Caterpillar 740B Dump Trucks with tail gates
18. Mack Water Cart 13,000 litres
19. International 8X4 Water Cart – 17,000 litres
20. Scania Fuel Truck
21. Hino 4x4 Field Service Truck
22. Isuzu NTR Small Tipper Truck (GVM: 6.5t, GCM: 10t)
23. 4 x Mack Truck and Super Dogs
24. 1 x Mack Truck & Rhino Side Tipper Quin Dog
25. 2 x Mack Semi Water Tankers with spray bars – 30,000 litres
26. Kenworth Prime Mover with Drake 4 x 4 full widener low loader
27. 1 x Drake 2 x 4 Dolly

Accessories

1. Hydraulic Hammer to suit 329DL
2. Hydraulic Grabs to suit 329DL
3. Assorted sizes & types of buckets
4. All excavators fitted with Quick Hitches

Quarry Equipment

1. McCloskey J50 Jaw Crusher – 50 tonne
2. McCloskey C44 Cone Crusher
3. McClosky i54 Impact Crusher
4. McClosky S190 Triple Deck screen
5. McCloskey R155 Scalper
6. 1 x 30' Stockpiler

Other Equipment

1. 2 'on trailer' air compressors
2. 2 x 600 litre diesel pods (1 can be trailer mounter)
3. 2 x 400 litre diesel pods
4. 1 x 400 litre trailer mounted diesel pod
5. 2 x 20' spare parts containers
6. 1 x 1500 litre water cart with 8hp Briggs & Stratton pump

MEX Truck Listing							
Truck Number	Year Model	Make	Truck Rego No.	Trailer	Year Model	Trailer Rego No	Description
MEX01	2011	Mack Granite Tipper	BP01FJ	Tefco Supe 98A	2012	Y00538	Truck & dog
MEX03	2011	Mack Granite Tipper	BR03WM	Tefco Tri 98A	2012	Y26800	Truck & Dog
MEX04	2013	Mack Granite Tipper	BW86FI	Tefco Tri 98A	2013	Z09692	Truck & dog
MEX05	2013	Mack Trident Side Tipper	BY81QV	Rhino Side Tipper	2014	Z52744	Truck & Quin Dog
MEX11	1981	International T2670	AT43CG	Not Applicable			17,000ltr Water Cart
MEX12	2006	Mack	BP594H	Not Applicable			13,000ltr Water Cart
MEX13		Mack CHR	CA73CE	Not Applicable			Truck
MEX13T		Not Applicable				Z87288	Water tanker
MEX14		Mack	CC61C2				Truck
MEX14T		Not Applicable				Z87335	Water Tanker
MEX17	2008	Kenworth	T408	Drake float & dolly	2014	TA65AK	Truck & Float
MEX18	2002	Isuzu		Not Applicable			Tip Truck
MEX19	2010	Hino	BR10SL	Not Applicable			Service Truck
MEX20	1988	Scania	PFK700	Not Applicable			Fuel Truck

